

**SinaClon BioScience**

[www.sinaclon.com](http://www.sinaclon.com)

Tel: +98(0)21 4463 0050-51,+98(0)21 4466 5156,98(0)2144666204

Mobile: +989023120052 ,54,56

Customer Service: +98(0)9023120059,+98(0)2636670907

Place your order: [order@sinaclon.com](mailto:order@sinaclon.com)



**DNP™ Kit**  
**High yield DNA Purification Kit**

For Research Use Only

**SINACLON**

Quantity: 50 preps (30 preps for Whole Blood)

Catalog Number: EX6071

Store Kit at RT

Store Protease at -20 °C

**SINACLON**  
Our Aim is Your Success

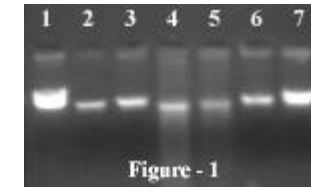
## Table of content

## Page

WARNINGS AND PRECAUTIONS	3
DESCRIPTION	3
KIT CONTENTS	3
SAMPLE PREPARATION	4
LABORATORY PROTOCOL	5
TROUBLESHOOTING	6
QUALITY CONTROL	6

**Fig.1 (Extracted DNA by DNP Kit from blood on 1% agarose)**

- 1- Lambda DNA 48.5 Kbp
- 2- Five months at  $-20^{\circ}\text{C}$
- 3- Three months at  $-20^{\circ}\text{C}$
- 4- Eight months at  $2-8^{\circ}\text{C}$
- 5- Six months at  $2-8^{\circ}\text{C}$
- 6- Two months at  $2-8^{\circ}\text{C}$
- 7- Three weeks at  $2-8^{\circ}\text{C}$



**SINACLON**  
Our Aim is Your Success

5. Use 1-10µl of DNA solution for each 50µl of PCR mixture. In case of high background PCR product, extracted template DNA may dilute 1/100 and repeat PCR reaction.

#### TROUBLESHOOTING

Sample	Possible reason	Solution
<b>Low Yield of DNA</b>		
Blood	Sample was frozen and thawed several times. Sample was stored at 2-4°C longer than 2 weeks. Blood clots were present in the sample.	Take new sample.
Cell culture	Too much cells were used for purification, and DNA pellet turned insoluble. Sample was frozen and thawed several times.	Reduce cell quantity twice or more. Take new sample.
<b>Degraded DNA</b>		
Any sample	Inappropriate storage conditions of the sample.	See Sample preparation section.
<b>RNA Contamination Present</b>		
Tissue, bacteria, cell cultures	-	Add of Ribonuclease A to a final concentration 0.2mg/ml to the sample before step 8) and incubate for 10min at 37°C.
<b>Enzymatic Reactions not Running</b>		
Blood	Heparinized blood was used. Deep Red to Black pellet produced in step 5	Use EDTA or citrate treated blood. Pre-warm Lysis Solution at 37°C and repeat extraction
Any sample	Residual reagents (Wash buffer, salts, etc.) present in prepared DNA, because of inaccurate handling during step 5.	Repeat extraction with once more Wash Buffer treatment.

#### QUALITY CONTROL

All components of the Kit are successfully tested in the DNA purification and amplification reaction for:

Frozen or fresh whole blood for Thalassemia gene, 50 mg of stomach biopsy for *H. pylori*, one colony of cultured bacteria for RAPD technique, 100 µl of homogenized sputum for MTB and 100µl of positive serum for HBV.

#### WARNINGS AND PRECAUTIONS

Avoid contact any kit reagents with skin & eyes. Wear gloves before use DNP™ Kit. Contact of Lysis Solution with **acids** or **bleach** solution, liberates toxic gas. When handling human samples, follow recommended procedures for biohazardous materials.

#### DESCRIPTION

Easy to use DNP™ Kit is designed to isolate double-stranded DNA from human or animal sources. The procedure requires 35-55 minutes and does not require phenol extraction nor changing tube during procedure. DNA isolation is based on lysis of the cells and subsequent selective DNA precipitation. Finally, the insoluble DNA is washed and desalted by Wash Buffer. DNA obtained by this method can be used for all molecular biology procedures (PCR, restriction digestion, cloning, Southern blot, DNA sequencing, etc.).

#### KIT CONTENTS:

<b>Protease (20 mg /ml)</b>	250 µl
<b>Protease Buffer</b>	5 ml
<b>Lysis Buffer</b>	20 ml
<b>Precipitation Solution (Isopropanol Base)</b>	15 ml
<b>Wash Buffer (Ethanol Base)</b>	2 ×50 ml
<b>Solvent Buffer</b>	2×1250 µl

**Note: Before use please prepare RNase A (Cat. No.: MO5411)**

SINACLON  
Our Aim is Your Success<sup>3</sup>

## SAMPLE PREPARATION

### -Blood

Whole blood must be collected in EDTA(1mg/ml)- to prevent clotting and DNA degradation. DNA extracted from heparinized blood cannot be used for PCR.

Typically 100µl of fresh blood is used for DNA isolation with the yield of 1.0-5.0 µg . Add 100µl of **Protease Buffer** to 100µl of fresh blood in a 1.5ml microcentrifuge tube and then add 5 µl of **protease**, place in 55°C for 30 min. If the blood is to be stored for later use it can be left at 2-4°C for (no longer than) 2 weeks. For long-term storage the samples should be aliquoted in 100µl portions and kept at -20°C.

### -Sera

Add 5 µl of **Protease** to 100 µl of serum or plasma in 1.5 ml microcentrifuge tube, vortex and placed in 72°C for 10 min and then follow the laboratory protocol. Usage of fresh sera samples is recommended. If it is impossible, samples should be frozen in aliquots of 100µl and stored at -20°C.

### -Homogenized sputum for detection of M. tuberculosis

Add 100µl of **Protease Buffer** to 100 µl of homogenized sputum sample Placed in 1.5 ml microfuge tube and then add 5 µl **Protease**, mix and then place at 55°C for 30-60 min and then place at 95°C water bath for 20 min. and follow the protocol.

### -CSF

Centrifuge 1- 1.5 ml of CSF specimen at 10.000 g for 5 min. and discard supernatant. Add 100 µl **Protease Buffer**, mix and then add 5 µl of **Protease** place at 55°C for 30 min and follow the protocol.

### -Cell Culture

Collect cells by centrifugation and resuspend in 100µl of **Protease Buffer**. Add 5 µl of **Protease** to resuspend cells, mix and then place in 55°C for 30-60 min and then follow the laboratory protocol. For the efficient DNA separation from cell components is not recommended to use more cells than 4.0-6.0×10<sup>6</sup>. Usage of thawed cells is not recommended.

### -Tissues

Add 100µl of **Protease Buffer** to 25-50mg of mammalian tissue (either fresh or frozen) placed in a 1.5ml microcentrifuge tube and then add 5 µl of **protease**, place in 55°C for 1 to 3 hr (up to degrade) and then follow the laboratory protocol. Usage of thawed samples is not recommended.

### -Bacterial Cultures (for PCR application)

Bacterial culture should be centrifuged for 10min at 7500g. Collect 2×10<sup>9</sup> or 10-20mg of bacterial culture (either fresh or frozen) in a 1.5ml microcentrifuge tube and suspend it in 100µl of **Protease Buffer**. Add 5 µl of **Protease** to suspension, mix and then place at 55°C for 30 min and follow the laboratory protocol. Usage of thawed cells is not recommended.

### -Buccal or Vaginal Swab for detection of bacterial genome

Air-dry the swab for at least 2 hr after collection. Place air-dry swab in 1.5ml microfuge tube, contains 200 µl sterile distilled water and incubate at 56°C water bath for 30 min. Press the stem end of tube towards the swab two to three times and then remove swab and place sample at 95°C water bath for 10 min then follow the protocol.

**Vortexing during incubation time may increase the DNA yield (every 5 minutes for 5 sec)**

## LABORATORY PROTOCOL

1. -Pre-warm kit to room temperature before use.  
-Pre-warm **Lysis Solution** by placing in 37°C for 10 min and softly shake.
2. Mix **100µl** of **sample** with **400µl** of **Lysis Solution** (**700µl** for **whole blood**) and **vortex 15-20 sec**. The sample should be completely homogenous suspension at this step. Any aggregation, clot or insoluble materials could be degraded by softly pipetting or removed.
3. Add 300µl of **Precipitation Solution** (For **whole blood** add **500 µl**), mix by **vortexing 5 seconds**, then centrifuge **12,000 g** for **10min**.
4. Decant by gently inverting of tube and placing the tube on tissue paper for 2-3 sec. down ward. Care for avoid of cross-contamination between different samples.
5. Add **1 ml Wash Buffer** to pellet, mix by **3-5 seconds vortexing** and centrifuge at 12,000 g for 5min, then decant (for whole blood and tissue sample repeat this step once more).
6. Pour off the **Wash Buffer** completely and dry pellet at 65°C for 5 min. (up to dry).
7. Suspend pellet in **50µl** of **Solvent Buffer** (for **serum** or **plasma** sample, suspend pellet in **30µl**) by gentle shaking and placing at 65°C for 5 min. Wash the wall of tube for mixing of any residual pellet by softly pipetting.
8. Precipitate unsolved materials by centrifuge, 30 sec at 12,000 g, supernatant contains purified DNA. Measure DNA concentration spectrophotometrically or visually after electrophoresis in **fresh 1% agarose gel**. (fig.1)

### Note:

1. For all sample If **RNA-free genomic DNA** is required, add **Ribonuclease A** (final concentration **0.2mg/ml**), to the sample during protease incubation.
2. Transcriptionally active tissue and bacterial culture contain high levels of RNA, which can copurify with genomic DNA. RNA may inhibit some downstream enzymatic reactions, but not the PCR itself. If **RNA-free genomic DNA** is required, add **Ribonuclease A** (final concentration **0.2mg/ml**), to the sample during protease incubation.
3. For **whole blood**, **DNA yield** depends on quantity of leukocyte cells and storage duration and condition of sample.
4. Since **DNA quantity** is too small, **Viral DNA** from sera samples is invisible in agarose gel and only host nucleic acids from lysed leucocytes may be monitored